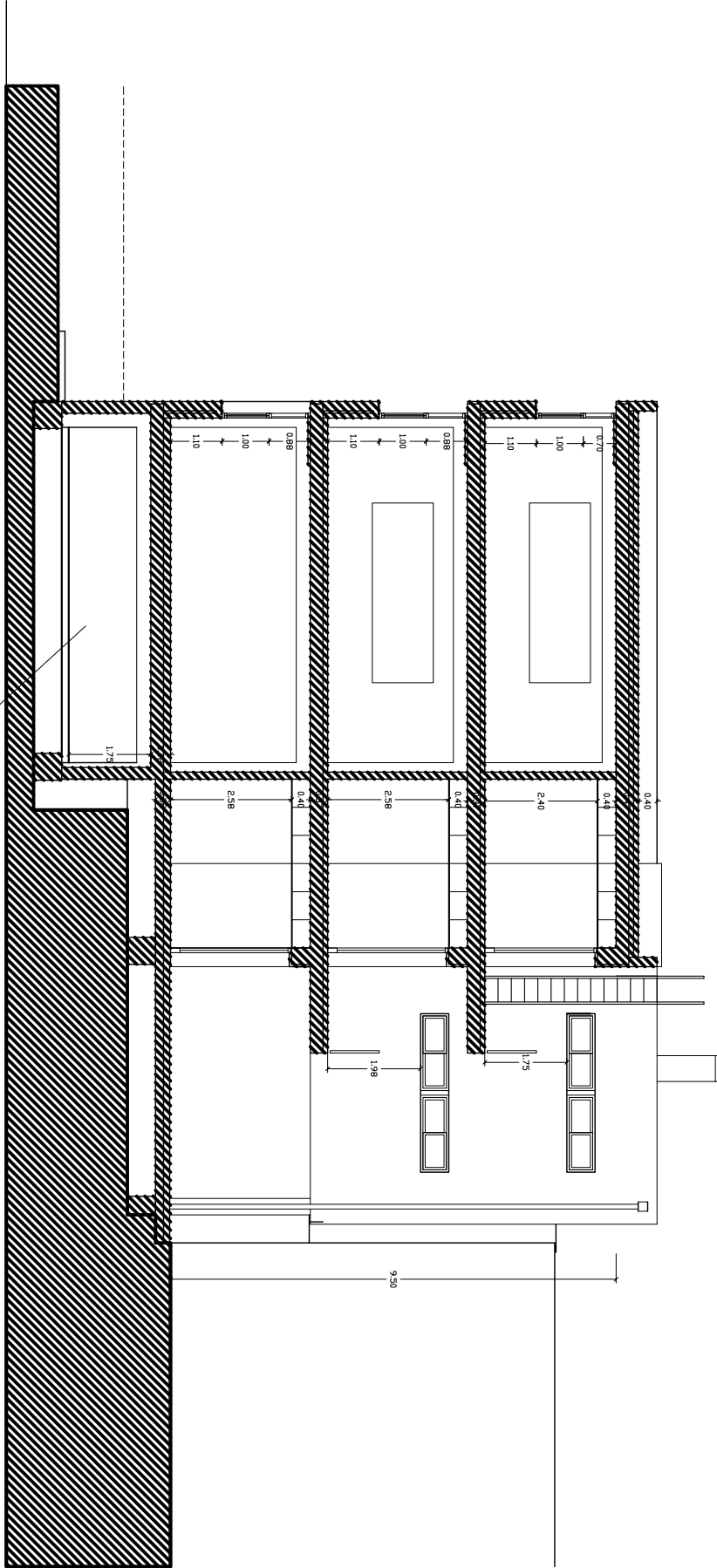


SECCION CC  
ESCALA 1/50

DEPOSITOS DE  
AGUA POTABLE  
I CONTRA INCENDIOS



|   |  |
|---|--|
| 0905  | PROYECTO PASAD Y<br>DE SECCION DE<br>AMPLIACION Y<br>RECONSTRUCCION<br>DEL EDIFICIO<br>CASASOVAS SITUADO<br>EN AV. DE JULI<br>GARCIA, 20.<br>T.M. DE SCHLIER |
| ANDREAS<br>SCHULZ   |  |
| EDUARDO<br>SCHULZ<br>SOLO   |  |
| ARQUITECTOS<br>C/ GENT 47<br>TEL. 01-55-55-55-55<br>TEL. 01-55-55-55-55<br>www.schulz.com |  |
| INSTITUT<br>D'INFRASTRUCTURES<br>I CULTIVALS  |  |
| PROYECTOS   |  |
| SECCION CC  |  |
| 1/50  |  |
| ESCALA  |  |
| JUNIO 2009  |  |
| NUMERO  | 13   |

This document was created with Win2PDF available at <http://www.daneprairie.com>.  
The unregistered version of Win2PDF is for evaluation or non-commercial use only.